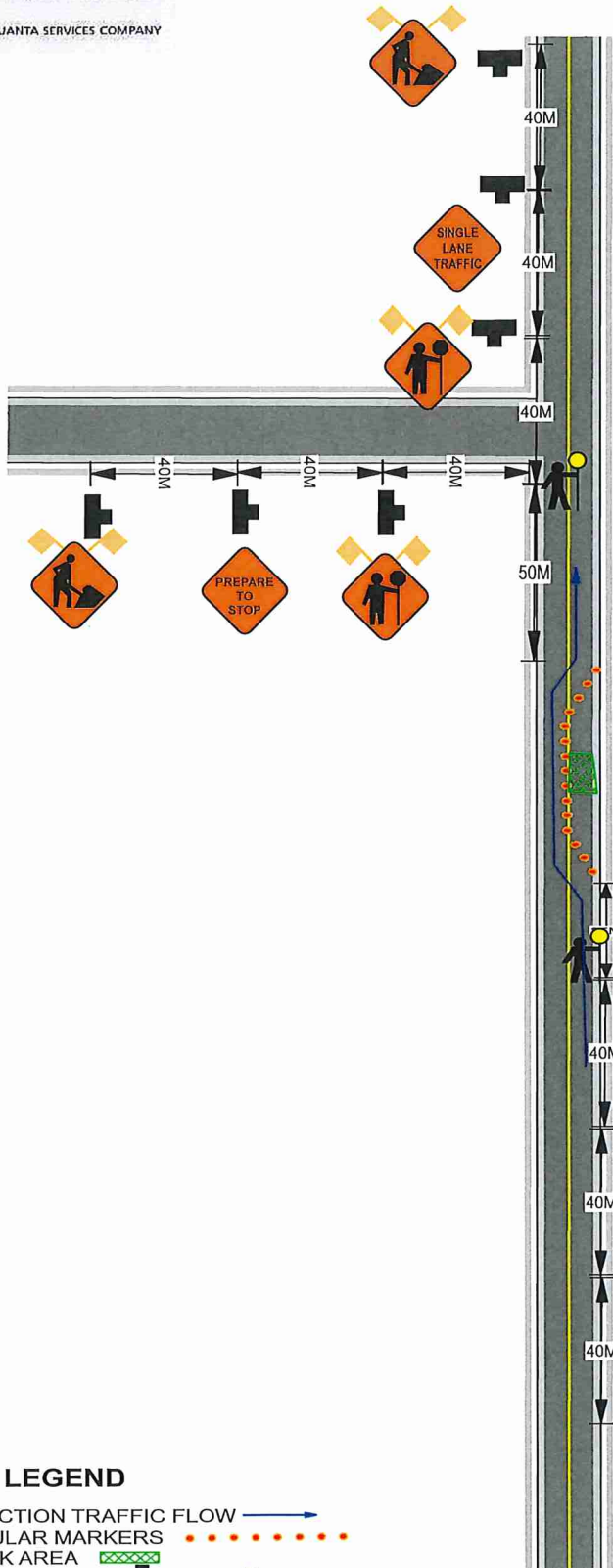




APRIL 2019  
 HOURS OF OPERATION 7:00AM - 5:00PM  
 WORK WILL TAKE ONE DAY TO COMPLETE



**NOTE:**

ALL SIDEWALKS - CROSSWALKS AND BUS STOPS WILL REMAIN OPEN

TRAFFIC CONTROL WILL ASSIST WITH DRIVEWAYS AFFECTED BY  
 WORK ZONE CLOSURE

SPEED LIMIT ON COOTE STREET AND MAPLE AVE IS 50 KM PER HOUR  
 ALL SIGNS WILL BE PLACED ON TRIPOD STANDS WITH FLAGS

ADVANCE WARNING SIGNS WILL BE PLACED ON ALL INTERSECTING  
 SIDE STREETS WHEN REQUIRED

**LEGEND**

- DIRECTION TRAFFIC FLOW 
- TUBULAR MARKERS 
- WORK AREA 
- SIGN STANDS 
- TRAFFIC CONTROLLER 
- BUS STOP 

Canadian Utility Construction  
 Jon Gray 604-841-7644

Traffic Control Will Be Provided By  
 Canadian Utility Construction  
 Brittany Ponych 604-828-0244